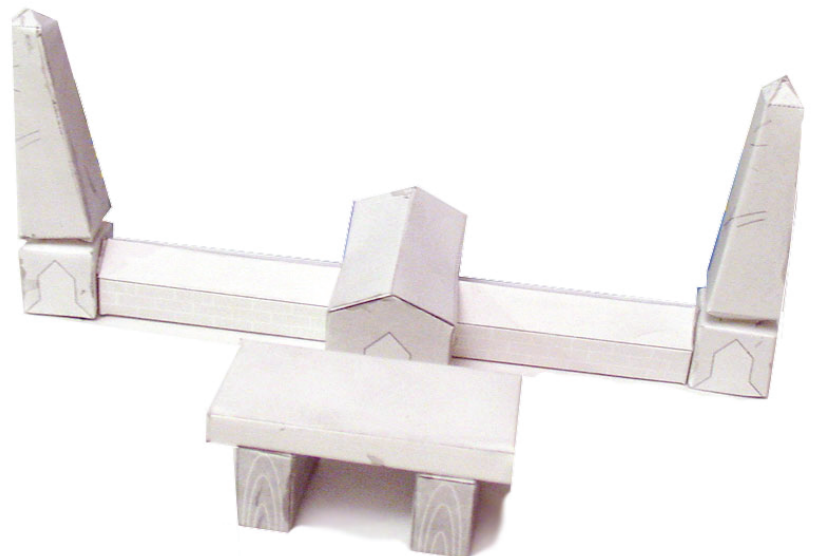


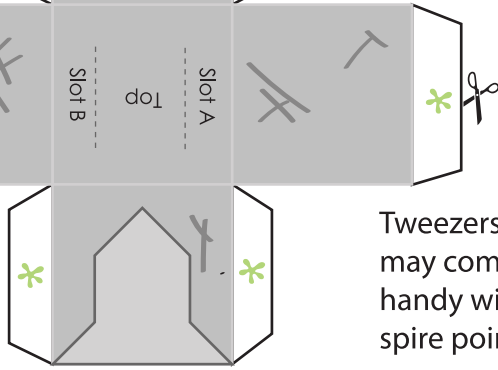
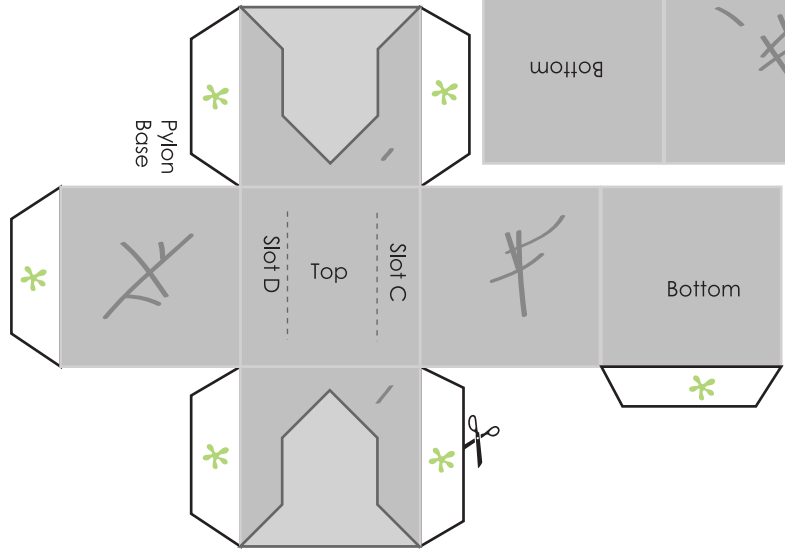
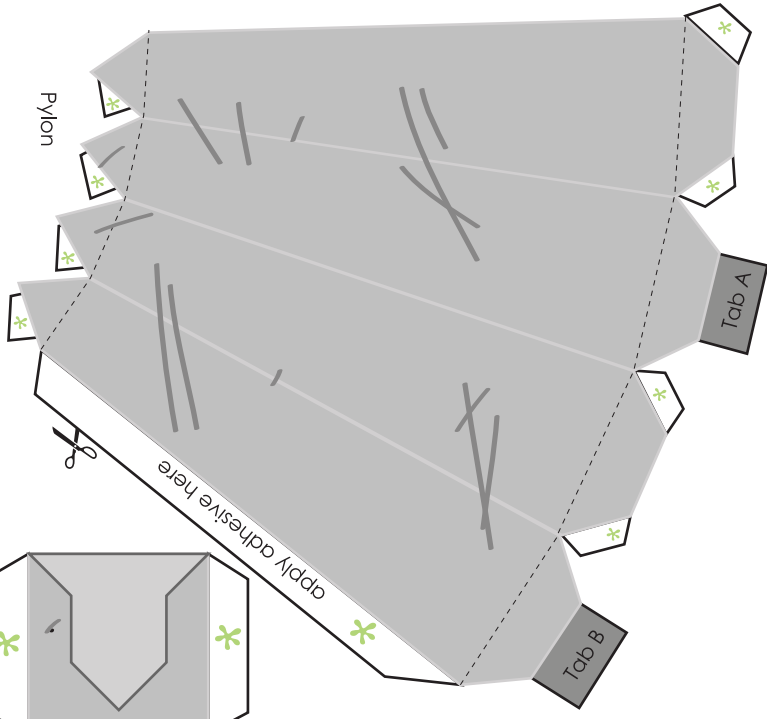
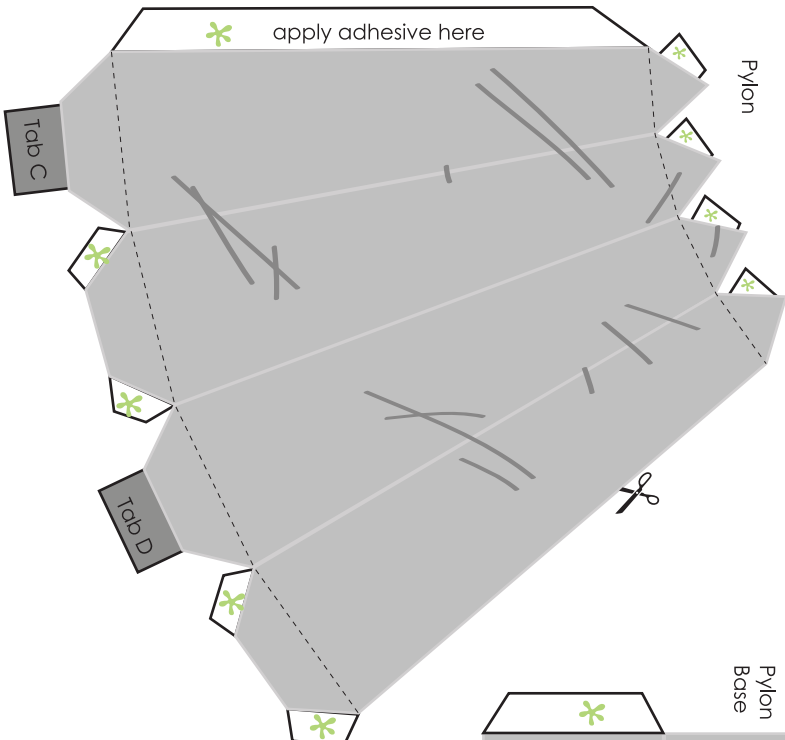
Apply adhesive to the tabs with a *

Assemble this box and have it straddle the wall in the middle.

Use the city backdrop and Stay Puff™ of your choosing behind this wall.

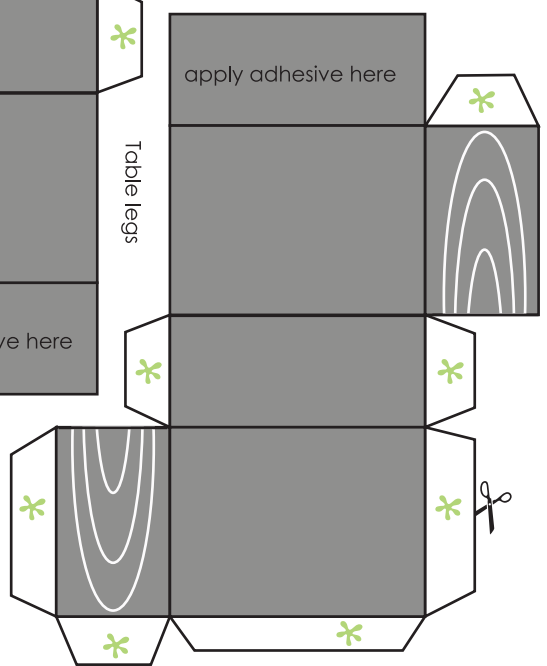
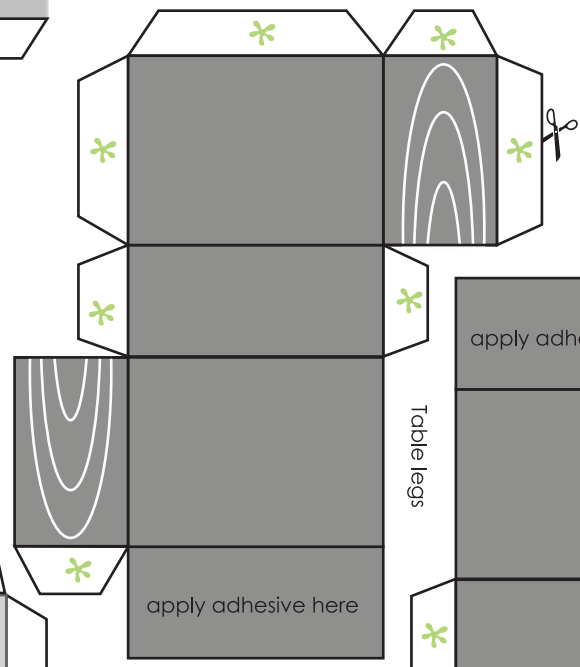
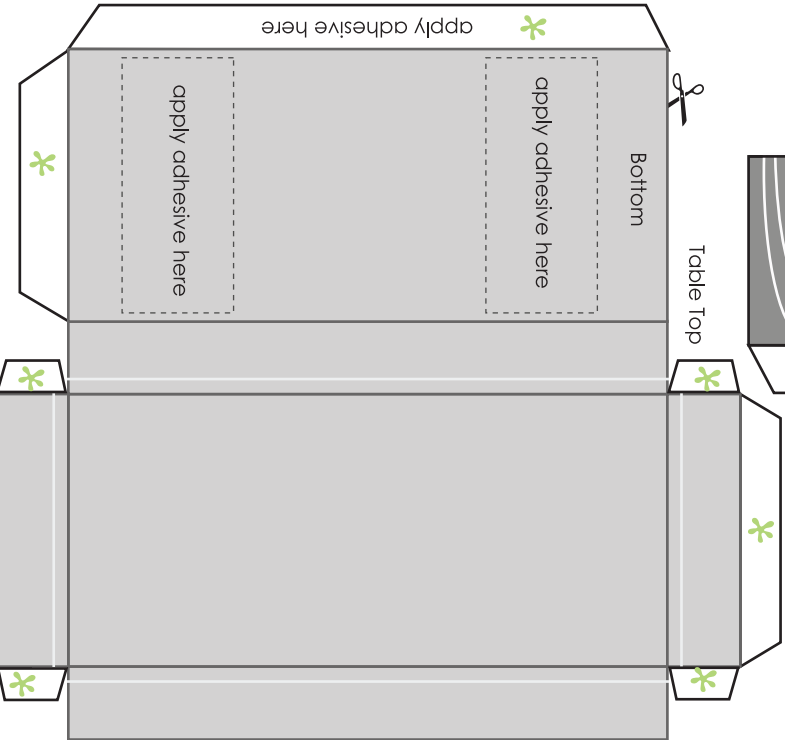
Print out multiple copies of these two sheets to expand your diorama.

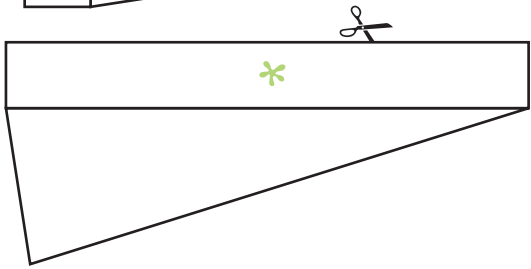
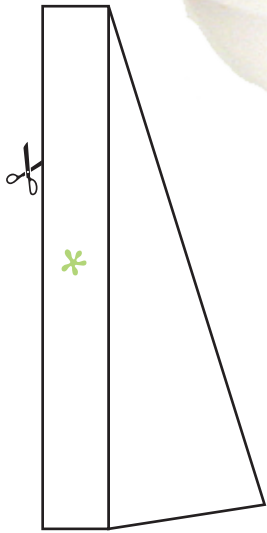




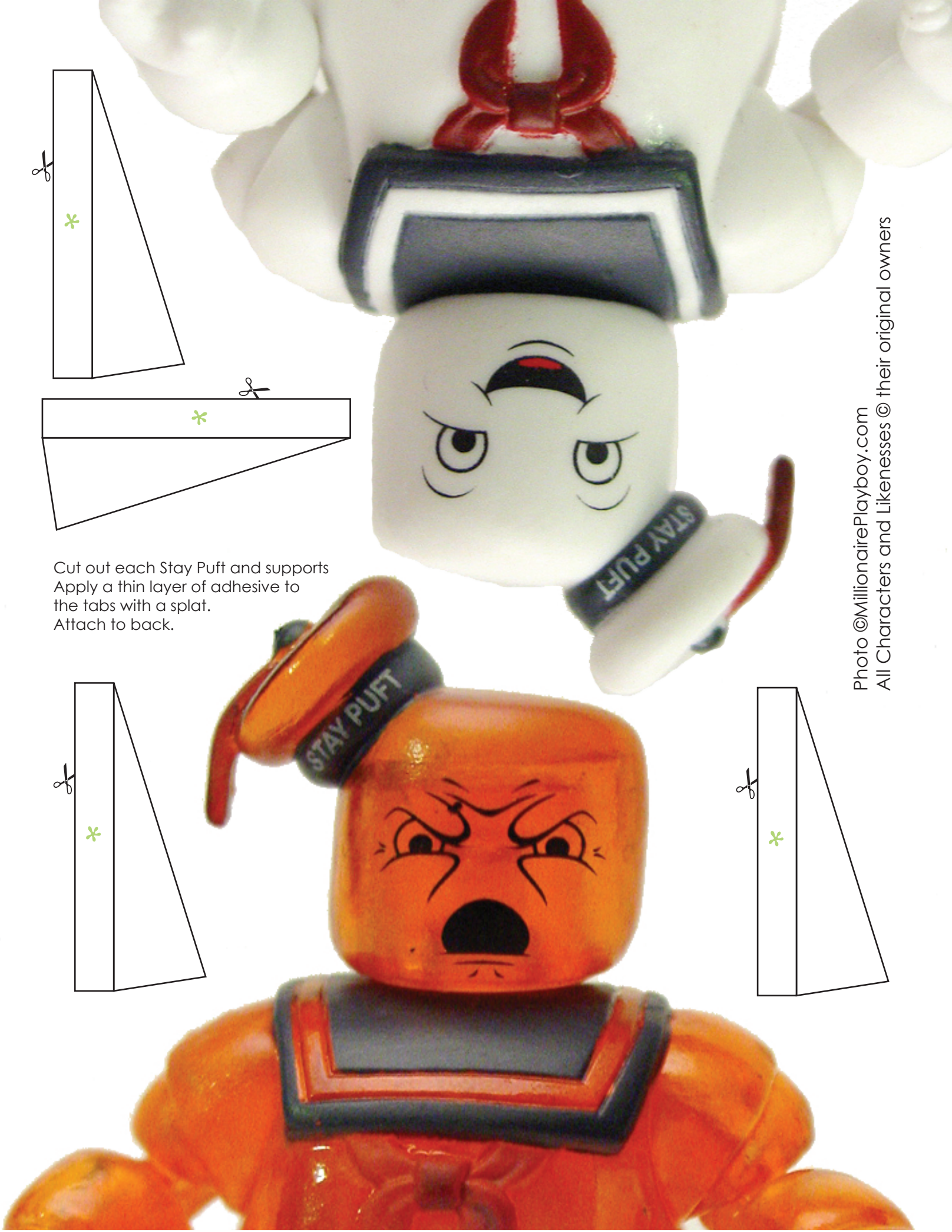
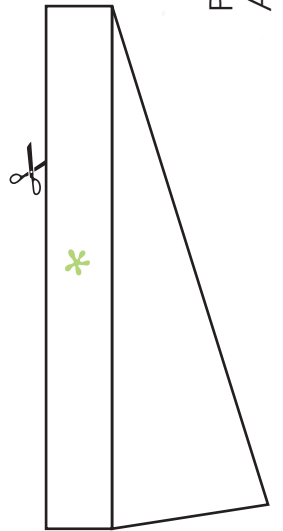
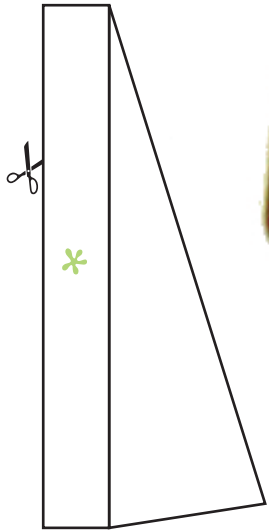
Tweezers may come in handy with the spire points

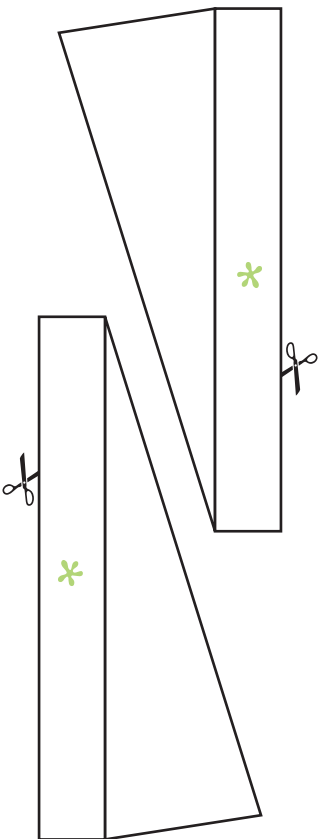
Apply adhesive to the tabs with a 





Cut out each Stay Puff and supports
Apply a thin layer of adhesive to
the tabs with a splat.
Attach to back.





Cut these supports, put some adhesive on the tabs with a splat symbol, attach to back.

This city backdrop will tile horizontally, if you print out more than one copy, you can line them up side to side for a larger scene.

Art © MillionairePlayboy.com

